

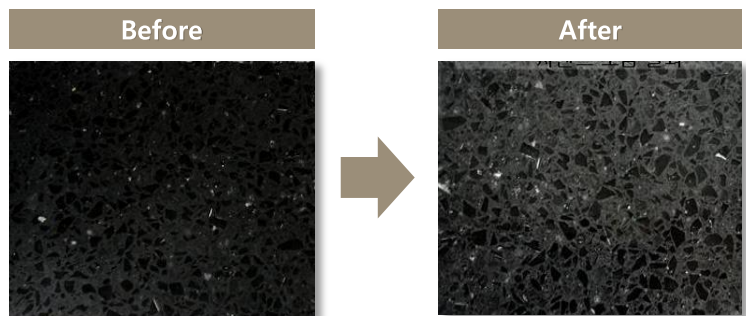
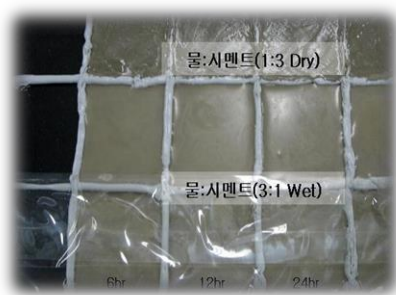
Substance of Accura®

Material	wt%	Remark
Unsaturated polyester resin	7%	Binder
Quartz	93%	Chip and filler
Colorant and additives	small amount	-

Result of Strong-alkali & Strong-acid Resistance Test

	Reagent	PH	Dry/Wet	Discoloration
Alkali	Cement : Water = 3 : 1	12.5	Dry	Little
			Wet	Little
	Cement : Water = 1 : 3	12	Dry	Little
			Wet	Little
Acid	3% NaOH	13	Wet	Little
	10% HCl	< 1	Wet	Not affect

- * Exposed time : 24hour
- * Dry : Exposure in the air after staining
- * Wet : Covered with plastic film to prevent evaporation



This Technical Bulletin is intended to provide guidelines for optimal fabrication, installation, and performance of Kurve Ltd products mentioned. Though the information contained herein is deemed reliable, none of the contents--including but not limited to the instructions, techniques, graphics, and recommendations--is to be understood as implying legal liability of fitness for a specific purpose, any other type of warranty, or being complete or absolute in its range and nature of information.

Depending on the user's particular application, all necessary measures must be taken to verify and test the adequacy for such needs or application. Any information or recommendation herein is strictly for purposes of reference and as such, Kurve Ltd assumes no responsibility for its suitability or accuracy or the use of such information for products other than Kurve Ltd Accura® quartz surfaces.

Conclusion

- Engineered stone may appear discoloration cause by strong alkali.
- The product should be avoided exposure to strong alkali such as cement paste, concrete and so on.
- Alkali resistance of the engineered stone.

PH	Exposed time	Resistance
< 10	< 8 hr	Not affect
> 10	> 8 hr	Discoloration

This Technical Bulletin is intended to provide guidelines for optimal fabrication, installation, and performance of Kurve Ltd products mentioned. Though the information contained herein is deemed reliable, none of the contents--including but not limited to the instructions, techniques, graphics, and recommendations--is to be understood as implying legal liability of fitness for a specific purpose, any other type of warranty, or being complete or absolute in its range and nature of information.

Depending on the user's particular application, all necessary measures must be taken to verify and test the adequacy for such needs or application. Any information or recommendation herein is strictly for purposes of reference and as such, Kurve Ltd assumes no responsibility for its suitability or accuracy or the use of such information for products other than Kurve Ltd Accura® quartz surfaces.